

This article was downloaded by: [Jeffrey Zirpoli]

On: 19 March 2013, At: 14:34

Publisher: Taylor & Francis

Informa Ltd Registered in England and Wales Registered Number: 1072954 Registered office: Mortimer House, 37-41 Mortimer Street, London W1T 3JH, UK



Ethology Ecology & Evolution

Publication details, including instructions for authors and subscription information:

<http://www.tandfonline.com/loi/teee20>

Parasites and plumage in Steller's jays: an experimental field test of the parasite-mediated handicap hypothesis

J.A. Zirpoli^a, J.M. Black^a & P.O. Gabriel^a

^a Department of Wildlife, Humboldt State University, 1 Harpst Street, Arcata, CA, 95521, USA

Version of record first published: 08 Mar 2013.

To cite this article: J.A. Zirpoli, J.M. Black & P.O. Gabriel (2013): Parasites and plumage in Steller's jays: an experimental field test of the parasite-mediated handicap hypothesis, *Ethology Ecology & Evolution*, DOI:10.1080/03949370.2012.742462

To link to this article: <http://dx.doi.org/10.1080/03949370.2012.742462>

PLEASE SCROLL DOWN FOR ARTICLE

Full terms and conditions of use: <http://www.tandfonline.com/page/terms-and-conditions>

This article may be used for research, teaching, and private study purposes. Any substantial or systematic reproduction, redistribution, reselling, loan, sub-licensing, systematic supply, or distribution in any form to anyone is expressly forbidden.

The publisher does not give any warranty express or implied or make any representation that the contents will be complete or accurate or up to date. The accuracy of any instructions, formulae, and drug doses should be independently verified with primary sources. The publisher shall not be liable for any loss, actions, claims, proceedings, demand, or costs or damages whatsoever or howsoever caused arising directly or indirectly in connection with or arising out of the use of this material.

Parasites and plumage in Steller's jays: an experimental field test of the parasite-mediated handicap hypothesis

J.A. ZIRPOLI^{1,2}, J.M. BLACK¹ and P.O. GABRIEL¹

¹ Department of Wildlife, Humboldt State University, 1 Harpst Street, Arcata, CA 95521, USA

Received 25 December 2011, accepted 7 July 2012

The handicap hypothesis broadly argues that ornamental traits and displays are costly to produce and are a function of individual quality and condition. Consequently, the extent of ornament expression can act as an honest indicator of quality, condition or susceptibility to parasites, and influence the behavior of mates or competitors. We used reflectance spectrometry to quantify non-iridescent, ultraviolet (UV) and blue structurally-based plumage color and character size in relation to individual condition (feather growth rate) and occurrence of disease caused by a parasite infestation (knemidokoptic mange) in wild male Steller's jays (*Cyanocitta stelleri*). We then attempted to experimentally reduce parasite load prior to molt and quantified the relative change in plumage and condition. Those birds with faster feather growth rates (i.e., in better condition) had lower hues (i.e., reflected shorter wavelengths, displaying a more intense, brilliant UV-blue color), suggesting the possibility of condition or feather growth rate-dependent production of color. We found that UV reflectance (UV chroma) was positively related to the occurrence of disease. We detected no effect of experimental treatment on plumage or condition. In conclusion, our results are suggestive of possible condition-dependent development of structurally-based plumage, and the positive relationship between macro-parasite-caused disease intensity and UV blue plumage color, demonstrated for the first time in this study, did not support the parasite-mediated handicap hypothesis.

KEY WORDS: condition-dependent, *Cyanocitta stelleri*, handicap, parasites, ptilochronology, Steller's jay, structural color, ultraviolet reflectance.

INTRODUCTION

In many species, ornamental traits and displays function in predator-prey interactions, agonistic encounters, intra-sexual interactions and often mate selection, where females choose mates with elaborate, ornamental traits (DARWIN 1871; FISHER 1915; M. ANDERSSON 1982; S. ANDERSSON 1994; M. ANDERSSON & IWASA 1996). Several

² Corresponding author: Jeffrey A. Zirpoli, 6609 Rialto Ave, Fresno, CA 93723, USA (E-mail: jeffzirpoli@gmail.com).

attempts have been made to explain the evolution and maintenance of this preference for the most exaggerated ornaments (FISHER 1915; RYAN 1990; RYAN & KEDDY-HECTOR 1992; S. ANDERSSON 1994). One group of proposed explanations, the “good genes” collection of hypotheses (see M. ANDERSSON 1982; KODRIC-BROWN & BROWN 1984), includes the handicap (ZAHAVI 1975, 1977) and the closely associated parasite-mediated handicap hypothesis (HAMILTON & ZUK 1982).

The handicap principle asserts that costly secondary sexual traits, including elaborate patterns, colors or displays, may act as honest indicators of intrinsic individual quality or condition. Exceptionally healthy or fit individuals can achieve maximum expression of these energetically costly traits. Intrinsic individual quality can therefore be assessed by potential mates or competitors via condition-dependent development of traits, and influence mate selection or conspecific behavior (ZAHAVI 1975, 1977). HAMILTON & ZUK’s (1982) hypothesis explicitly incorporated disease as the potential proximate mechanisms regulating development of ornamental traits. Disease can impart heavy costs on the nutritional state and ultimately the health and condition of individuals (HAMILTON & ZUK 1982; FOLSTAD & KARTER 1992; PROCTOR & OWENS 2000). The parasite-mediated handicap hypothesis posits that individuals with “good genes” for pathogen resistance can better afford to produce and display elaborate traits without suffering diminished health and ultimately fitness. In addition, high quality individuals can acquire more resources to meet daily energy requirements, maintain condition and fight disease. HAMILTON & ZUK (1982) argued that ornamental traits can reliably signal current infection or susceptibility to parasites. By assessing the degree of trait expression, potential mates can assess parasite load or susceptibility and can avoid direct exposure to parasites for themselves and their offspring. More importantly, they may benefit from acquisition of superior genes for parasite resistance in future offspring (HAMILTON & ZUK 1982; FOLSTAD & KARTER 1992).

It has been suggested that individual quality in animals can only be honestly signaled by secondary sexual characteristics which are costly to produce and maintain (ZAHAVI 1975, 1977; HAMILTON & ZUK 1982; IWASA & POMIANKOWSKI 1994; but see SZÁMADÓ 2010). In birds there are large energetic costs associated with the annual regrowth of feathers and associated ornamental plumage and colors, such as immune system function, thermoregulatory stability and nutritional demands (LINDSTRÖM et al. 1993; FITZPATRICK 1998; S. ANDERSSON 1999; HILL 2011). Additional costs associated with displaying exaggerated plumage may include increased competition and predation risks (ROHWER & EWALD 1981; HAMILTON & ZUK 1982; FOLSTAD & KARTER 1992; LINDSTRÖM et al. 1993; S. ANDERSSON & PRAGER 2006).

Coloration in feathers can be produced by pigment or structurally-based mechanisms. Pigment-, including melanin-, based colors are responsible for most of the red, orange, yellow, black, and brown colors found in feathers (HILL 2006; MCGRAW 2006). Structural colors are produced by the interaction of feather microstructure and light and are responsible for blue, iridescent and most green of feathers (PRUM et al. 1998; PRUM 2006). Non-iridescent, blue structural coloration is produced through ordered scattering of light by microscopic air vacuoles of the keratin layer and light-absorbing melanin (PRUM et al. 1998; PRUM 2006; SHAWKEY & HILL 2006). Structurally-based feathers can reflect light in the wavelengths (color) visible to humans (400–700 nm) and in the ultraviolet range (UV; 315–400 nm), which is within the visible range of birds (BURKHARDT 1989; BENNET & CUTHILL 1994; CUTHILL et al. 2000). While individual variation, condition dependency, and behavioral influence of pigment-based color is well documented (reviewed in JOHNSTONE 1995; HILL 2002), variation of reflectance in the UV range of structurally-based colors has only more recently been studied (DALE

2006; HILL 2006; PRUM 2006). Recent research has revealed some links between UV coloration and various indices or measures of quality (DOUCET 2002; DOUTRELANT et al. 2008, 2012; SIEFFERMAN et al. 2008; GRIGGIO et al. 2010b). In addition to plumage coloration, the size and symmetry of plumage ornaments, such as crests or elaborate patterning, may also be condition-dependent and under selective pressure (S. ANDERSSON 1994).

Our objectives were to experimentally test the parasite-mediated handicap hypothesis in a wild population of adult male Steller's jays, *Cyanocitta stelleri*. We quantified individual variation in non-iridescent structural plumage color (brightness, chroma, hue), the width of blue-black wing bars, and the size of crest plumage in relation to condition (quantified by measuring the alternating light and dark bands on the feather, which signify daily feather growth rates) and disease caused by infestation of *Knemidokoptes* mites. Parasite loads were then experimentally reduced using a parasiticide prior to the post-breeding molt. Subsequently, we tested for a change in plumage characteristics following the molt. Based on the handicap and parasite-mediated handicap hypotheses, we tested whether secondary sexual traits were positively related to individual condition or negatively to the occurrence of disease. We also determined whether potential plumage ornament quality and individual condition improved in individuals with experimentally reduced parasite loads.

METHODS

Species and general methods

We conducted the experiment on a population of Steller's jays, as part of an ongoing, long-term study of behavior and ecology (BLACK 1998) in Humboldt County, CA (USA, 40°59'N, 124°06'W), which was characterized by mild wet winters and cool, dry summers (BARNHART et al. 1992). The approximately 70 ha study area was composed of suburban neighborhoods and the Humboldt State University campus bordering a coastal redwood (*Sequoia sempervirens*) forest. Steller's jays are common, conspicuous members of the corvid family with blue and black plumage, found across much of the western United States (GREENE et al. 1998). Adult birds in our population are non-migratory and undergo a full molt between June and September (PYLE 1987; GREENE et al. 1998). Jays in this population have black crests with paired blue stripes on the crest, which are often erected and displayed during agonistic and sexual behaviors (BROWN 1964). Their flight feathers have a sexually dichromatic, non-iridescent structurally-based blue color with dark banding which reflects light in the UV spectrum (Fig. 1; SHAWKEY & HILL 2006). The dorsal sides of the wings (i.e., the blue color and banded pattern) are displayed and visible to potential mates and competitors during sexual display and agonistic encounters (BROWN 1964).

We measured plumage characteristics and parasite load from January–March 2007–2010 (blue-black wing bars and feather growth rates 2009–2010 only). Male birds captured in 2009 were administered the experimental treatment in June–July 2009 and captured again from January–March 2010 (before–after control–impact design). Plumage traits were quantified when mate selection and bond formation occurs (BROWN 1964; J.M. BLACK & P.O. GABRIEL unpub.). Birds were sexed via observations of sex-specific vocalizations (BROWN 1964; GREENE et al. 1998; J.M. BLACK & P.O. GABRIEL unpub.) and genetic analysis (K. OVEREEM, unpub.). To quantify plumage reflectance and condition, secondary flight feather 7 was removed and stored in a climate controlled environment. All birds were held for approximately 30 min from time of capture and were immediately released upon completion of data collection.

Preliminary analysis indicated that adult male Steller's jay body mass at the time of molt, independent of body size, was positively related to feather growth rates ($r_{22} = 0.50$, 95% CI = 0.12–0.75, Pearson's correlation, $P < 0.02$). Passerine body weights can fluctuate over short time

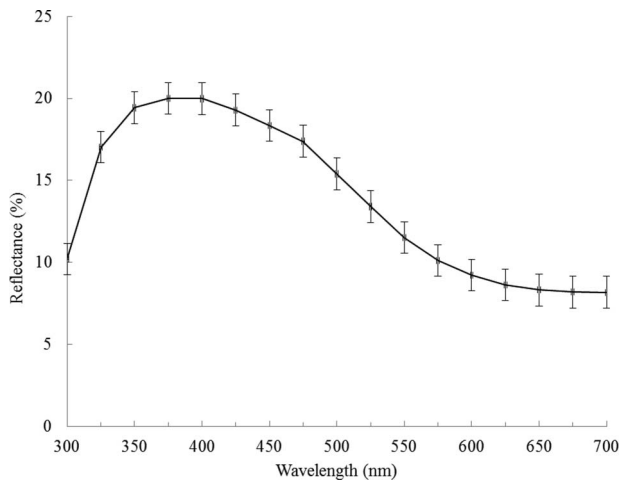


Fig. 1. — Average reflectance curve (relative to a white standard) of an adult male Steller's jay ($n = 32$; \pm standard error) structurally-based blue secondary flight feather, Arcata, CA 2009.

periods (LEHIKONEN 1987; HAFTORN 1989); therefore we examined feather growth rates, which are static, temporally stable representations of individual nutritional, conditional and physical state during molt (GRUBB 2006). Quantifying growth bars taken from birds in the non-breeding season allowed us to create an index of individual condition during the post-breeding molt, when feather structures responsible for color are developed. Using methods described by GRUBB (2006), we quantified growth rates on one secondary flight feather by measuring the pairs of alternating bands of color on the inner vane, which each represent 24 hr of growth (6 light-dark bands per bird). We only measured feathers which had well-defined growth bars throughout the entire vane. Average daily growth bar width was calculated to create an index of bird condition, where larger daily growth rates (i.e., faster feather growth) signified better condition during molt (GRUBB 2006).

We quantified structural feather color using an Ocean Optics S2000 spectrometer, a PX-2 xenon pulse lamp and a fiber-optic probe (ENDLER 1990; S. ANDERSSON & PRAGER 2006; Ocean Optics, Dunedin, Florida, USA). We restricted the analysis to wavelengths between 300 and 700 nm and extracted the original reflectance spectra with CLR software, version 1.05 (MONTGOMERIE 2008). We placed feathers on black paperboard and held the fiber-optic probe at 90° to the feather. Feather reflectance was measured at six random points, within the three central segments between the dark bars on the outer vane. The reflectance spectra were averaged to calculate three standard descriptors of reflectance for each individual: brightness, UV chroma and hue (MONTGOMERIE 2006). We calculated feather brightness as the total amount of light reflected, relative to a white standard (300–700 nm). Ultraviolet chroma, or the spectral purity, is the ratio of total reflectance over the UV range and reflectance of the total spectrum ($R_{300-400}/R_{300-700}$ nm), where a higher percentage equates to reflected wavelengths more restricted to UV range (i.e., more pure UV reflectance). Hue, the principal color reflected, was the wavelength at peak reflectance, where reflection of shorter wavelengths indicate a more UV-shifted color (i.e., more reflectance in the UV range) (MONTGOMERIE 2006).

We quantified the width of the repeating blue-black barring on the secondary feathers collected. We averaged the width of 5 bi-colored patches, centered on a line located $2/3$ of the length of the entire feather from the proximal end (morphologic data was collected to the nearest 0.1 mm) (GRUBB 2006). We measured crest size as the maximum raised crest feather height from top of the skull. We quantified crest stripe height by measuring the height of both stripes and calculating an average stripe height.

Visible evidence of chronic mange or scaly-leg mite (*Knemidokoptes* spp.) infestation in this population of Steller's jays was regularly encountered and documented during routine trapping efforts (J.M. BLACK & P.O. GABRIEL unpub.). The results of necropsy confirmed the presence of *Knemidokoptes* spp. (UNITED STATES GEOLOGIC SURVEY 2000). The disease caused by *Knemidokoptes* mites can range from mild cases of inflammation to severe leg and digit inflammation, digit malformation, hemorrhaging wounds and secondary infections (BAKER et al. 1956; KIMERSE 1966; SHANTA et al. 2006). Severe cases of mange can result in interference with food consumption by giving continuous irritation, ultimately reducing health, reducing condition and increasing morbidity (SOULSBY 1982; PENCE et al. 1999; LATTA 2003). Knemidokoptic mange was quantified by creating a binomial variable of non-infested (sub-clinical infestation, no visible signs of inflammation) and infested (clinically diseased, observable signs of inflammation, scale loss, and nail or digit malformation).

Experimental procedure

We randomly assigned birds to either treatment or control groups. The treatment group received ivermectin (Ivomec[®] Merial, Boise, Idaho, USA), a broad-spectrum anti-parasite medication recommended for the treatment of knemidokoptic infestation (KAHN 2005; ULLAH et al. 2005). Ivermectin was diluted with propylene glycol (0.25mg/ml) and administered subcutaneously at 0.4 mg/kg body weight (KAHN 2005; ULLAH et al. 2005). Control birds received sterile water injected subcutaneously at 0.4 ml/kg.

Data analysis

All variables and residuals were tested for deviation from normality and homoscedacity with Shapiro-Wilk and Bartlett's tests, respectively. To control for body size, we used residuals from a linear regression of wing chord versus crest height ($F_{1,31} = 3.789$, $P = 0.057$) and crest stripe ($F_{1,31} = 2.356$, $P = 0.131$) to create indices of ornament size. Two-tailed Pearson's correlations were used to assess the relationship between average feather growth rate and plumage characteristics. Preliminary analysis indicated no effect of year on all feather color or crest variables from data collected in 2007, 2008 and 2009 [analysis of variance (ANOVA), $P > 0.6$], and therefore these data were pooled to test for differences in expression of plumage and feather growth rate of non-infested and infested individuals using two-tailed t-tests. We used paired t-tests to examine changes in secondary sexual characteristics and feather growth rates in treatment and control groups after experimental treatment. This was calculated as the difference in a given variable before and after the treatment. Two-tailed t-tests were used to compare absolute change in treatment versus control group (i.e., test for difference in extent of change), only when a significant change was found for a given variable. We confined tests to male birds aged as 3rd year or older as preliminary analysis indicated that juvenile plumage coloration differed from adult plumage.

Although results are presented with traditional test statistics and P values, interpretation based solely on these values may not reveal the true biological significance of relationships (NAKAGAWA 2004; GARAMSZEGI 2006). Furthermore, to reduce the probability of committing Type II errors while conducting multiple comparisons we did not employ any Bonferroni corrections to our critical values (NAKAGAWA 2004; GARAMSZEGI 2006). To evaluate the biological significance of our results, we assessed the direction and strength of relationships among variables, in place of simply evaluating based on critical values by calculating effect sizes and 95% confidence intervals. We used effect sizes and 95% confidence intervals to infer the magnitude of relationships and the precision and certainty with which the data indicate those relationships (GARAMSZEGI 2006; NAKAGAWA & CUTHILL 2007; GARAMSZEGI et al. 2009). We calculated correlation coefficients (i.e., effect sizes) from regressions either directly (Pearson's r_S) or from two-sample tests (calculated as d and converted into r ; COHEN 1988). We interpreted results with 95% confidence intervals

that did not overlap zero with an effect size of $r = 0.1$ as small, $r = 0.3$ as medium, and $r = 0.5$ as large (COHEN 1988).

RESULTS

Plumage and feather growth rate

The color hue in male Steller's jay plumage was inversely related to feather growth rates with a medium effect, meaning birds which grew feathers faster reflected shorter and bluer, UV wavelengths ($r_{22} = -0.41$, 95% CI = from -0.69 to -0.008 , $P = 0.05$; Fig. 2). Feather growth rates were not correlated to brightness and UV chroma ($r_{22} = -0.13$, 95% CI = from -0.50 to 0.28 , $P = 0.53$; $r_{22} = 0.08$, 95% CI = from -0.33 to 0.47 , $P = 0.73$, respectively). The size of the blue-black wing barring, crest and crest stripe was not related to feather growth rates ($r_{22} = -0.06$, 95% CI = from -0.37 to 0.43 , $P = 0.79$; $r_{22} = 0.07$, 95% CI = from -0.32 to 0.48 , $P = 0.75$; $r_{22} = 0.29$, 95% CI = from -0.13 to 0.62 , $P = 0.16$, respectively).

Plumage and parasites

Forty-two percent of adult male Steller's jays ($n = 63$) had visible signs of knemidokoptic mange. Ultraviolet chroma was greater in birds with mange than birds with no mange with a medium effect ($r_{59} = 0.31$, 95% CI = from 0.06 to 0.51 , t -test, $t = -2.56$, $P = 0.013$; Fig. 3). Feather brightness and hue was not related to occurrence of mange ($r_{59} = -0.12$, 95% CI = from -0.35 to 0.13 , t -test, $t = 0.95$, $P = 0.35$; $r_{59} = -0.08$, 95% CI = from -0.32 to 0.17 , t -test, $t = 0.67$, $P = 0.5$, respectively). The blue-black wing bars, crest height and crest stripe height were not related to occurrence of mange ($r_{28} = -0.27$, 95% CI = from -0.58 to 0.10 , t -test, $t = 1.41$, $P < 0.02$; $r_{60} = 0.23$, 95% CI = from -0.02 to 0.45 , t -test, $t = -1.91$, $P = 0.06$; $r_{55} = 0.02$, 95% CI = from -0.23 to 0.26 , t -test, $t = -0.26$, $P = 0.79$, respectively). Feather growth rates were similar for birds with and without signs of mange ($r_{27} = 0.11$, 95% CI = from -0.30 to 0.50 , t -test, $t = -0.58$, $P = 0.57$).

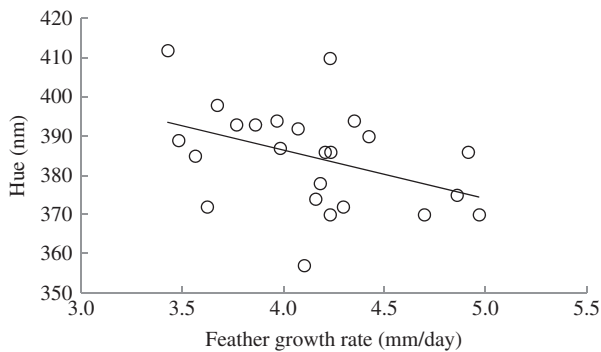


Fig. 2. — Average feather growth rates and hue (wavelength at peak reflectance) of adult male Steller's jays' secondary flight feathers in Arcata, CA 2009.

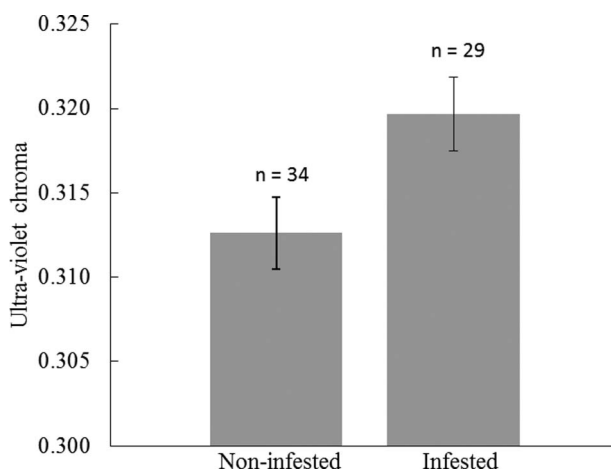


Fig. 3. — Average plumage ultraviolet chroma (\pm standard error; ratio of reflectance in the ultraviolet range over total spectrum; 300–400/300–700 nm) of secondary flight feather in adult male Steller's jays with visible signs of knemidokoptic mange (infested) and with no signs of mange (non-infested), Arcata, CA 2007–2009.

Experimental treatment

We recaptured 11 treatment and 10 control male Steller's jays. Brightness in the recaptured treatment group was higher than the recaptured control group prior to treatment, but the original randomly selected group had similar values. Only one bird that received the experimental treatment had visible signs of healing from wounds caused by knemidokoptic mite infestation (e.g., reduced inflammation, re-growth of scales on legs).

Regarding the relative change of feather characteristics after administering the parasiticide, treatment birds grew feathers which were 10% brighter with a strong effect (i.e., reflected more light) ($r_9 = 0.62$, 95% CI = from 0.24 to 0.83, paired t -test, $t = -5.23$, $P < 0.0005$; Table 1), while control birds had a 5% increase in brightness after their experimental treatments with a strong effect ($r_9 = 0.56$, 95% CI = from 0.16 to 0.80, paired t -test, $t = -2.29$, $P = 0.023$; Table 1). However, the extent of absolute change was similar in the treatment and control groups ($r_{18} = 0.27$, 95% CI = from -0.63 to 0.20, two-tailed t -test, $t = -1.59$, $P = 0.12$). Ultraviolet chroma did not change in the treatment or control group ($r_{10} = 0.08$, 95% CI = from -0.35 to 0.49, paired t -test, $t = -0.85$, $P = 0.20$; $r_9 = -0.09$, 95% CI = from -0.51 to 0.36, paired t -test, $t = 0.883$, $P = 0.80$, respectively; Table 1). Plumage hue also did not change in treatment or control groups ($r_{10} = 0.004$, 95% CI = from -0.42 to 0.42, paired t -test, $t = -0.018$, $P = 0.50$; $r_9 = 0.15$, 95% CI = from -0.31 to 0.56, paired t -test, $t = -0.840$, $P = 0.41$, respectively; Table 1). The width of the blue-black barring did not change in either treatment or control groups ($r_{10} = 0.09$, 95% CI = from -0.34 to 0.49, paired t -test, $t = -1.18$, $P = 0.13$; $r_9 = 0.33$, 95% CI = from -0.13 to 0.68, paired t -test, $t = -1.54$, $P = 0.13$, respectively; Table 1). Crest stripe height in the treatment group increased by 14% with a strong effect ($r_9 = 0.63$, 95% CI = from 0.25 to 0.84, paired t -test, $t = -5.19$, $P < 0.0003$; Table 1), while control birds increased by 10% after experimental treatment ($r_{10} = 0.33$, 95% CI = from 0.15 to 0.69, paired t -test, $t = -2.86$, $P = 0.014$; Table 1).

Table 1.

Male Steller's jay color components, secondary sexual traits and average daily feather growth rates (\pm SD) of treatment and control groups before and after experimental parasite reduction, Arcata, CA 2009–2010.

	Treatment ($n = 11$)		Control ($n = 10$)	
	Before	After	Before	After
Brightness (%)	58.5 \pm 3.8	64.5 \pm 4.42, $n = 10$	53.84 \pm 2.1	56.7 \pm 3.96
UV chroma	0.315 \pm 0.015	0.318 \pm 0.012	0.318 \pm 0.011	0.316 \pm 0.005
Hue (nm)	387.45 \pm 12.89	387.54 \pm 9.98	386.84 \pm 13.9	391.3 \pm 13.1
Wing bar width (mm)	7.9 \pm 1.08	8.1 \pm 0.6	8 \pm 0.54	8.38 \pm 0.49
Crest stripe height (mm)	16.1 \pm 4.5	18.3 \pm 4.6, $n = 10$	17.53 \pm 2.7	19.43 \pm 2.7
Crest height (mm)	46.03 \pm 2.5	46.18 \pm 2.5	45.32 \pm 1.77	44.8 \pm 1.4
Feather growth rate (mm/day)	4.34 \pm 0.44	4.12 \pm 0.36, $n = 7$	4.16 \pm 0.46	4.26 \pm 0.48, $n = 9$

Brightness (total reflectance relative to white standard, 300–700 nm), ultraviolet chroma (ratio of reflectance in UV range over total range; 300–400/300–700 nm), hue (wavelength at peak reflectance), significant within group differences are bolded (significance based on effect sizes and 95% confidence intervals, see text for further description of statistical methods).

The extent of absolute change in crest stripe height was similar in the treatment and control groups ($r_{18} = -0.009$, 95% CI = from -0.45 to 0.43 , one-tailed t -test, $t = 0.36$, $P = 0.35$). Crest feather height did not change in treatment or control groups ($r_{10} = 0.03$, 95% CI = from -0.40 to 0.45 , paired t -test, $t = -0.30$, $P = 0.39$; $r_9 = -0.15$, 95% CI = from -0.55 to 0.32 , paired t -test, $t = 1.19$, $P = 0.26$, respectively; Table 1). Feather growth rates did not change in either the treatment or control groups ($r_6 = -0.243$, 95% CI = from -0.65 to 0.28 , paired t -test, $t = -0.92$, $P = 0.80$; $r_8 = 0.10$, 95% CI = from -0.37 to 0.54 , paired t -test, $t = -4.6$, $P = 0.66$, respectively; Table 1).

DISCUSSION

Male jays which had higher feather growth rates displayed lower color hues, meaning they had bluer feathers with greater reflectance of shorter, UV wavelengths. Variation in feather color may be attributed in part to the energetic costs of producing precise feather microstructure; specifically, reflection at shorter wavelengths may require more fine-scaled structures which are potentially costly to produce (FITZPATRICK 1998; S. ANDERSSON & PRAGER 2006; but see DUFRESNE et al. 2009). Although their results were inconclusive for hue, SHAWKEY et al. (2003) found that microscopic structures within the feather predicted variation in other color attributes. We found that individuals in the best condition during molt, indicated by faster feather growth rates, may have developed the finest-scaled and most precise microstructure, indicated by bluer feathers. These results suggest that feather color may fit the handicap model of condition-dependent production and may honestly signal individual quality to mates or competitors. Similar results were found in blue grosbeaks (*Guiraca caerulea*) (KEYSER & HILL 1999), blue-black grassquits (*Volatinia jacarina*) (DOUCET 2002), blue

tits (*Parus caeruleus*) (PETERS et al. 2007; but see PETERS et al. 2011) and juvenile Florida scrub-jays (*Aphelocoma coerulescens*) (SIEFFERMAN et al. 2008).

The parasite-mediated model of sexual selection suggests that ornamental characters should co-vary inversely with parasite load (HAMILTON & ZUK 1982). Our results did not support this prediction and were in contrast with some recent findings (DOUCET & MONTGOMERIE 2003; FIGUEROLA et al. 2003; HILL et al. 2005; MOUGET et al. 2005). We found that male Steller's jays with knemidokoptic mange had higher UV chroma than non-infested birds, indicating that birds with mange reflected a greater proportion of wavelengths in the UV range than non-diseased birds. The proximate mechanisms controlling the development of feather microstructure may be linked to relative hormone levels. FOLSTAD & KARTER (1992) proposed the immunocompetence handicap hypothesis (reviewed by ROBERTS et al. 2004), suggesting a proximate hormonal mechanism controlling and stimulating the development of ornamental traits linked to immune function. In particular, males which produce the highest levels of testosterone may experience reduced immune function and increased parasite susceptibility while still growing the highest quality ornaments. Correspondingly, ROBERTS et al. (2009) and PETERS et al. (2006) found that sexually mature, 1st-year male blue tits with experimentally increased testosterone levels, and juvenile male blue tits with naturally higher testosterone levels, respectively, grew feathers with more UV reflectance, potentially due to differences in preening behaviors. Perhaps male Steller's jays with higher levels of testosterone experienced reduced immune function and were more susceptible to mange, while still growing feathers with more UV reflectance. Similarly, experimental results suggested that UV plumage production in the red-backed fairy-wren (*Malurus melanocephalus*) was related to testosterone levels (LINDSAY et al. 2011). More research is needed to reveal possible links between plumage color, hormone production and disease susceptibility in this species.

Steller's jays in both treatment and control groups grew brighter feathers and taller crest stripes after their experimental treatments, although the relative change in both groups was similar. No significant changes in other variables were detected after experimental treatment. These results suggest there was no detectable effect of experimental treatment. Repeated treatments may have been necessary for substantive healing and permanent suppression of this chronic infestation (KAHN 2005; ULLAH et al. 2005). Furthermore, sampling more feathers from an individual may have increased the accuracy of our individual ornamental color production quantification, and increased sample sizes could have reduced the initial intrinsic differences in experimental groups.

Annual variation in birds' plumage may be attributed to other non-mutually exclusive mechanisms. Variation in energetic allotment for plumage development can be related to reproductive activities prior to the molt (e.g., nesting date, nest success, number of nesting attempts), environmental conditions during the molt (e.g., weather, food availability) (MCGRAW et al. 2002; OHLSSON et al. 2002), conditions and individual behavior after the molt (e.g., weather, food availability, preening behavior) (ÖRNBORG et al. 2002; DELHEY et al. 2006; SHAWKEY et al. 2007; GRIGGIO et al. 2010a; SURMACKI et al. 2011), and age-dependent production of color (SIEFFERMAN et al. 2005). As brightness (i.e., reflection of longer wavelengths) increases, the proportion of reflectance in the UV range (i.e., reflection of shorter wavelengths) decreases, possibly resulting in less colorful, UV-reflecting feathers (S. ANDERSSON & PRAGER 2006). For example, ÖRNBORG et al. (2002) found that structurally-based feather brightness increased and UV chroma decreased with increased feather wear in blue tits, and GRIGGIO et al. (2010a) found that time spent preening positively co-varied with UV reflectance in

budgerigars (*Melopsittacus undulatus*). A preliminary analysis of our data indicated no effect of sampling date on any measure of plumage reflectance over our 90-day trapping period (all $P > 0.5$), although sampling feathers across an entire year may expose color changes due to wear in male Steller's jays.

Although the signaling role of plumage reflectance in Steller's jays is unknown, UV reflectance has been demonstrated to be an influential factor in assortative mating and intra-sexual competition in other species (S. ANDERSSON et al. 1998; HUNT et al. 1999; HILL 2006; SENAR 2006; GRIGGIO et al. 2010b). We propose that high-quality plumage may be the most durable, (i.e., highest structural integrity, feathers most resistant to wear), and preened the most, reducing the relative increase in brightness as the season progresses and maintaining higher UV reflectance. Mate selection in Steller's jays is thought to occur primarily in the few months preceding breeding, which is temporally farthest from molt (BROWN 1964; J.M. BLACK & P.O. GABRIEL unpub.), possibly allowing female birds to reliably assess potential mate quality and performance using variation in UV feather reflectance.

Similar to other recent studies addressing structural feather coloration, our result suggests potential condition- or feather growth rate-dependent production of structurally-based blue feather color. We also demonstrate, for the first time, that the occurrence of macro-parasite-caused disease was positively associated with higher UV reflectance. Understanding fitness consequences in relation to how the variation in sexual characteristics influences the behavior of mates, competitors, and predators will be informative. This knowledge will aid our understanding of the evolution and maintenance of sexual ornamentation in Steller's jays. Hormone production, immune function and genetic foundations of ornament development and plumage maintenance will also be productive avenues of research increasing our understanding of sexual selection.

ACKNOWLEDGEMENTS

Thanks to Richard N. Brown and T. Luke George for their valuable comments, Jeff Jacobsen and Christina Rockwell for helpful comments and invaluable field work, Jenna Breckel, Cindy S. Choo, Lin Chew, Betsy Elkinton, Holly Garrod, Will Goldenberg, Laura Latura, and Chris Smith for assistance with fieldwork, and Anthony Desch for material support. This work was supported by Humboldt State University's Sponsored Programs Foundation [grant number 1.57-5712 and D05740]. In consideration of animal safety and welfare, this work was approved by Humboldt State University's Institutional Animal Care and Use Committee Protocol (IACUC Protocol No. 08/09.W.36.A).

REFERENCES

- ANDERSSON M. 1982. Sexual selection, natural selection and quality advertisement. *Biological Journal of the Linnean Society* 17: 375-393.
- ANDERSSON M. & IWASA Y. 1996. Sexual selection. *Trends in Ecology & Evolution* 11: 53-58.
- ANDERSSON S. 1994. Sexual selection in animals. *Princeton: Princeton University Press*.
- ANDERSSON S. 1999. Morphology of UV and violet reflectance in a whistling-thrush: implications for the study of structural colour signaling in birds. *Journal of Avian Biology* 30: 193-204.
- ANDERSSON S., ÖRNBORG J. & ANDERSSON M. 1998. Ultraviolet sexual dimorphism and assortative mating in blue tits. *Proceedings of the Royal Society of London (B)* 265: 445-450.

- ANDERSSON S. & PRAGER M. 2006. Quantifying colors, pp. 41–89. In: Hill G.E. & McGraw K.J., Eds. Bird coloration, Vol. 1. Mechanisms and measurements. *Boston: Harvard University Press*.
- BAKER E.W., EVANS T.M., GOULD D.J., HULL W.B. & KEEGAN H.L. 1956. A manual of parasitic mites. *New York: National Pest Control Association Inc.*
- BARNHART R.A., BOYD M.J. & PEQUEGNAT J.E. 1992. The ecology of Humboldt Bay, California: an estuarine profile. *Washington, DC: US Fish and Wildlife Service Biological Report*.
- BENNETT A.T.D. & CUTHILL I.C. 1994. Ultraviolet vision in birds – what is its function. *Vision Research* 34: 1471–1478.
- BLACK J.M. 1998. Behavior and ecology of urban, forest fringe Steller's Jays. (Available at: <http://www.humboldt.edu/wildlife/faculty/black/research/stellersjays.html>).
- BROWN J.L. 1964. The integration of agonistic behavior in the Steller's jay (*Cyanocitta stelleri*; Gmelin). *Berkeley: University of California Press*.
- BURKHARDT D. 1989. UV vision, a bird's eye view of feathers. *Journal of Comparative Physiology* 164: 787–796.
- COHEN J. 1988. Statistical power analysis for the behavioral sciences. *Hillsdale: L. Erlbaum*.
- CUTHILL I.C., PARTRIDGE J.C., BENNETT A.T.D., CHURCH S.C., HART N.S. & HUNT S. 2000. Ultraviolet vision in birds. *Advances in the Study of Behavior* 29: 159–214.
- DALE J. 2006. Intraspecific variation in coloration, pp. 36–85. In: Hill G.E. & McGraw K.J., Eds. Bird coloration, Vol. 2. Mechanisms and measurements. *Boston: Harvard University Press*.
- DARWIN C. 1871. The descent of man and selection in relation to sex. *London: J. Murray*.
- DELHEY K., PETERS A., JOHNSEN A. & KEMPENAEERS B. 2006. Seasonal changes in blue tit crown color: do they signal individual quality? *Behavioral Ecology* 17: 790–798.
- DOUCET S.M. 2002. Structural plumage coloration, male body size, and condition in the blue-black grassquit. *Condor* 104: 30–38.
- DOUCET S.M. & MONTGOMERIE M. 2003. Structural plumage colour and parasites in satin bowerbirds *Ptilonorhynchus violaceus*: implications for sexual selection. *Journal of Avian Biology* 34: 237–242.
- DOUTRELANT C., GREGOIRE A., GRNAC N., GOMEZ D., LAMBRECHTS M. & PERRET P. 2008. Female coloration indicates female reproductive capacity in blue tits. *Journal of Evolutionary Biology* 21: 226–233.
- DUFRESNE E.R., NOH H., SARANATHAN V., MOCHRIE S.G.J., CAO H. & PRUM R.O. 2009. Self-assembly of amorphous biophotonic nanostructures by phase separation. *Soft Matter* 5: 1792–1795.
- ENDLER J.A. 1990. On the measurement and classification of colour in studies of animal colour patterns. *Biological Journal of the Linnean Society* 41: 315–352.
- FIGUEROLA J., DOMÈNECH J. & SENER J.C. 2003. Plumage colour is related to ectosymbiont load during moult in the serin, *Serinus serinus*: an experimental study. *Animal Behaviour* 65: 551–557.
- FISHER R.A. 1915. The evolution of sexual preferences. *Eugenics Review* 7: 184–192.
- FITZPATRICK S. 1998. Colour schemes for birds, structural coloration and signals of quality in feathers. *Annales Zoologici Fennici* 35: 67–77.
- FOLSTAD I. & KARTER A.J. 1992. Parasites, bright males and the immunocompetence handicap. *The American Naturalist* 139: 603–622.
- GARAMSZEGI L.Z. 2006. Comparing effect sizes across variables: generalization without the need for Bonferroni correction. *Behavioral Ecology* 17: 682–687.
- GARAMSZEGI L.Z., CALHIM S., DOCHTERMANN N., HEGYI G., HURD P.L., JØRGENSEN C., KUTSUKAKE N., LAJEUNESSE M.J., POLLARD K.A., SCHIELZETH H., SYMONDS M.R.E. & NAKAGAWA S. 2009. Changing philosophies and tools for statistical inferences in behavioral ecology. *Behavioral Ecology* 20: 1363–1375.
- GREENE E., DAVIDSON W. & MUEHLER V. 1998. Steller's jay, pp. 36–85. In: Poole A. & Grill G., Eds. *The Birds of North America*, No. 343. *Philadelphia: The Academy of Natural Sciences and the American Ornithologists' Union*.

- GRIGGIO M., HOI H. & PILASTRO A. 2010a. Plumage maintenance affects ultraviolet colour and female preference in the budgerigar. *Behavioural Processes* 84: 739–744.
- GRIGGIO M., ZANOLLO V., & HOI H. 2010b. UV plumage color is an honest signal of quality in budgerigars. *Ecological Research* 25: 77–82.
- GRUBB T.C. 2006. Ptilochronology, feather time and biology of birds. *Oxford: Oxford University Press*.
- HAFTORN S. 1989. Seasonal and diurnal body weight variations in titmice based on individual analyses of individual birds. *Wilson Bulletin* 101: 217–235.
- HAMILTON W.D. & ZUK M. 1982. Heritable true fitness and bright birds: a role for parasites? *Science* 218: 384–387.
- HILL G.E. 2002. A red bird in a brown bag. *New York: Oxford University Press*.
- HILL G.E. 2006. Female mate choice for ornamental coloration, pp. 137–200. In: Hill G.E. & McGraw K.J., Eds. Bird coloration, Vol. 1. Mechanisms and measurements. *Boston: Harvard University Press*.
- HILL G.E. 2011. Condition-dependent traits as signals of the functionality of vital cellular processes. *Ecology Letters* 17: 625–634.
- HILL G.E., DOUCET S.M. & BUCHHOLZ R. 2005. The effect of coccidial infection on iridescent plumage coloration in wild turkeys. *Animal Behaviour* 69: 387–394.
- HUNT S., CUTHILL I.C., BENNET A.T.D. & GRIFFITHS R. 1999. Preferences for ultraviolet partners in the blue tit. *Animal Behaviour* 58: 809–815.
- IWASA Y. & POMIANKOWSKI A. 1994. The evolution of mate preferences for multiple sexual ornaments. *Evolution* 48: 853–867.
- JOHNSTONE R.A. 1995. Sexual selection, honest advertisement and the handicap principle: reviewing the evidence. *Biological Reviews* 70: 1–65.
- KAHN C.M. 2005. The Merck veterinary manual, 9th ed. *Whitehouse Station: Merck and Co*.
- KEYSER A.J. & HILL G.E. 1999. Condition-dependent variation in the blue-ultraviolet coloration of a structurally based plumage ornament. *Proceedings of the Royal Society of London (B)* 266: 771–777.
- KIMERSE P. 1966. Cnemidocoptic mite infestation in wild birds. *Bulletin of the Wildlife Disease Association* 2: 86–99.
- KODRIC-BROWN A. & BROWN J. 1984. Truth in advertising: the kinds of traits favored by sexual selection. *The American Naturalist* 124: 309–323.
- LATTA S.C. 2003. Effects of scaly-leg mite infestation on body condition and site fidelity of migratory warblers in the Dominican Republic. *The Auk* 3: 730–743.
- LEHIKIONEN E. 1987. Seasonality of the daily weight cycle in wintering passerines and its consequences. *Ornis Scandinavica* 18: 216–226.
- LINDSAY W.R., WEBSTER M.S. & SCHWAB H. 2011. Sexually selected male plumage color is testosterone dependent in a tropical passerine bird, the red-backed fairy-wren (*Malurus melanocephalus*). (*PLoS ONE* 6: e26067. doi:10.1371/journal.pone.0026067)
- LINDSTRÖM Å., VISSER H.G. & DAAN S. 1993. The energetic cost of feather synthesis is proportional to basal metabolic rate. *Physiological Zoology* 66: 490–510.
- MCGRAW K.J. 2006. Mechanics of melanin-based coloration, pp. 243–294. In: Hill G.E. & McGraw K.J., Eds. Bird coloration, Vol. 1. Mechanisms and measurements. *Boston: Harvard University Press*.
- MCGRAW K.J., MACKILLOP E.A., DALE J. & HAUBER M.E. 2002. Different colors reveal different information: how nutritional stress affects the expression of melanin- and structurally based ornamental plumage. *Journal of Experimental Biology* 205: 3747–3755.
- MONTGOMERIE R. 2006. Analyzing colors, pp. 90–147. In: Hill G.E. & McGraw K.J., Eds. Bird coloration, Vol. 1. Mechanisms and measurements. *Boston: Harvard University Press*.
- MONTGOMERIE R. 2008. Analyzing colours; CLR, version 1.05. (Available at: <http://post.queensu.ca/~mont/color/analyze.html>).
- MOUGET F., REDPATH S. & LECKIE F. 2005. Ultra-violet reflectance of male and female red grouse, *Lagopus lagopus scoticus*: sexual ornaments reflect nematode parasite intensity. *Journal of Avian Biology* 36: 203–209.

- NAKAGAWA S. 2004. A farewell to Bonferroni: the problems of low statistical power and publication bias. *Behavioral Ecology* 15: 1044–1045.
- NAKAGAWA S. & CUTHILL I.C. 2007. Effect size, confidence interval and statistical significance: a practical guide for biologists. *Biological Reviews* 82: 591–605.
- OHLSSON T., SMITH H.G., RÅBERG L. & HASSELQUIST D. 2002. Pheasant sexual ornaments reflect nutritional conditions during early growth. *Proceedings of the Royal Society of London (B)* 269: 21–27.
- ÖRNBORG J., ANDERSSON S., GRIFFITH S.C. & SHELDON B.C. 2002. Seasonal changes in a ultraviolet structural colour signal in blue tits, *Parus caeruleus*. *Biological Journal of the Linnean Society* 76: 237–245.
- PENCE D.B., COLE R.A., BRUGGER K.E. & FISCHER J.R. 1999. Epizootic podoknemidokoptiasis in American robins. *Journal of Wildlife Diseases* 35: 1–7.
- PETERS A., DELHEY K., GOYMANN W. & KEMPENAERS B. 2006. Age-dependent association between testosterone and crown UV coloration in male blue tits (*Parus caeruleus*). *Behavioral Ecology and Sociobiology* 59: 666–673.
- PETERS A., DELHEY K., JOHNSEN A. & KEMPENAERS B. 2007. The condition-dependent development of carotenoid-based and structural plumage in nestling blue tits: males and females differ. *The American Naturalist* 169: S122–S136.
- PETERS A., KURVERS R.H.J., ROBERTS M. & DELHEY K. 2011. No evidence for general condition-dependence of structural plumage colour in blue tits: an experiment. *Journal of Evolutionary Biology* 24IS: 976–987.
- PROCTOR H. & OWENS I. 2000. Mites and birds: diversity, parasitism and co-evolution. *Tree* 15: 358–365.
- PRUM R.O. 2006. Anatomy, physics and evolution of avian structural colors, pp. 295–352. In: Hill G.E. & McGraw K.J., Eds. Bird coloration, Vol. 1. Mechanisms and measurements. Boston: Harvard University Press.
- PRUM R.O., TORRES R. H., WILLIAMSON S. & DYCK J. 1998. Coherent light scattering by blue feather barbs. *Nature* 396: 28–29.
- PYLE P. 1987. Identification guide to North American passerines. *Bolinas: Slate Creek Press*.
- ROBERTS M.L., BUCHANAN K.L. & EVANS M.R. 2004. Testing the immunocompetence handicap hypothesis: a review of the evidence. *Animal Behaviour* 68: 227–239.
- ROBERTS M.L., RAS E. & PETERS A. 2009. Testosterone increases UV reflectance of sexually selected crown plumage in male blue tits. *Behavioral Ecology* 20: 535–541.
- ROHWER S. & EWALD P.W. 1981. The cost of dominance and advantage of subordination in a badge signaling system. *Evolution* 35: 441–454.
- RYAN M.J. 1990. Sexual selection, sensory systems, and sensory exploitation. *Oxford Surveys in Evolutionary Biology* 7: 156–195.
- RYAN M.J. & KEDDY-HECTOR A. 1992. Directional patterns of female mate choice and the role of sensory biases. *The American Naturalist* 13: S4–S35.
- SEAR J.C. 2006. Color displays as intrasexual signals of aggression and dominance, pp. 87–136. In: Hill G.E. & McGraw K.J., Eds. Bird coloration, Vol. 1. Mechanisms and measurements. Boston: Harvard University Press.
- SHANTA I.S., BEGUM N., ANISUZZAMAN BARI A.S.M. & KARIM M.J. 2006. Prevalence and clinicopathological effects of ectoparasites in backyard poultry. *Bangladesh Journal of Veterinary Medicine* 4: 19–26.
- SHAWKEY M.D., ESTES A.M., SIEFFERMAN L.M. & HILL G.E. 2003. Nanostructure predicts intraspecific variation in ultraviolet-blue plumage colour. *Proceedings of the Royal Society of London (B)* 270: 1455–1460.
- SHAWKEY M.D. & HILL G.E. 2006. Significance of a basal melanin layer to production of non-iridescent structural plumage color: evidence from an amelanotic Steller's jay (*Cyanocitta stelleri*). *Journal of Experimental Biology* 209: 1245–1250.
- SHAWKEY M.D., PILLAI S.R., HILL G.E., SIEFFERMAN L.M. & ROBERTS S.R. 2007. Bacteria as an agent of change in structural plumage color: correlation and experimental evidence. *The American Naturalist* 169: S112–121.

- SIEFFERMAN L., HILL G.E. & DOBSON F.S. 2005. Ornamental plumage coloration and condition are dependent on age in eastern bluebirds *Sialia sialis*. *Journal of Avian Biology* 36: 428–435.
- SIEFFERMAN L., SHAWKEY M.D., BOWMAN R. & WOOLFENDEN G.E. 2008. Juvenile coloration of Florida scrub-jay (*Alphelocoma coerulescens*) is sexually dichromatic and correlated with condition. *Journal of Ornithology* 149: 357–363.
- SOULSBY E.J.L. 1982. Helminths, arthropods and protozoa of domesticated animals, 7th ed. *Philadelphia: Lea and Febiger*.
- SURMACKI A., LUI M., MERCANDANTE A. & HILL G.E. 2011. Effect of feather abrasion on structural color in male eastern bluebirds. *Journal of Avian Biology* 42: 514–521.
- SZÁMADÓ S. 2010. The cost of honesty and the fallacy of the handicap principle. *Animal Behaviour* 81: 3–10.
- ULLAH A., KHAN M.S., KHAN J.A., PERVEZ K., AVAIS M. & MAQBOOL A. 2005. Effect of dilution and route of Ivermectin on lice infested domestic pigeons. *Integrated Journal of Agricultural Biology* 7: 855–856.
- UNITED STATES GEOLOGICAL SURVEY 2000. National Wildlife Health Center. Diagnostic Services Case Report 16653, Madison.
- ZAHAVI A. 1975. Mate selection – a selection for a handicap. *Journal of Theoretical Biology* 53: 205–214.
- ZAHAVI A. 1977. The cost of honesty (further remarks on the handicap principle). *Journal of Theoretical Biology* 67: 603–605.